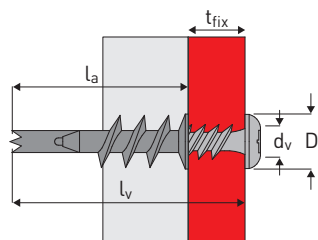


# DRIVA Self drilling anchor for plasterboard & aerated concrete

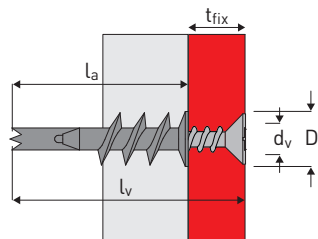
Technical Data Sheet update to **14.06.2016** / pag. 1 of 1



TP VERSION:



TF VERSION:



## APPROVALS / CERTIFICATIONS

In accordance with:

ELV 2000/53/EC  
RoHS 2002/95/EC  
2003/11/EC  
REACH 2006/1907/EC

## APPLICAZIONI

Fixing to plasterboard and aerated concrete.

Bathroom accessories, wall heaters.

Electrical switch boxes, trunking, conduit.

Curtain track.

## MATERIALS

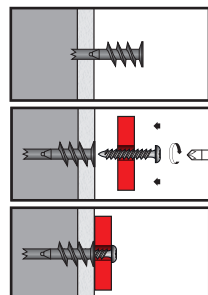
**Anchor body:**

zinc-aluminum alloy (Zamak 3)

**Screw:**

carbon steel, treated with zinc plating  
Cr<sup>3+</sup> thickness ≥ 5µm. Head type PZ2

## INSTALLATION



SELF DRILLING ANCHOR FOR MEDIUM LOADS, TO PLASTERBOARD & AERATED CONCRETE.

TECHNICAL DATA					
TYPE	Drilling depth	Ø drilling	Fixture thickness	Screw size	Ø collar
	mm	mm	mm	mm	mm
			t <sub>fix</sub>	d <sub>s x lv</sub>	D
DRIVA TP 12	35*	6*	<12	4,5x35	13
DRIVA TP 27	35*	6*	<27	4,5x5	13
DRIVA TF 5	35*	6*	<5	4,5x50	13

\*Predrilling with HSS drill bit is required: in laminated plasterboard or gypsum block: Ø 10 mm; in aerated concrete: Ø 6 mm

## Ultimate loads (NRu,m, VRu,m)

Anchor	TENSION [daN]			SHEAR daN]		
	DRIVA TP 12	DRIVA TP 27	DRIVA TF 5	DRIVA TP 12	DRIVA TP 27	DRIVA TF 5
Aerated concrete AAC 5	3	3	3	18	18	18
Single gypsum panel 13mm	3	3	3	18	18	18

## Recommended loads (NRec, VRec)

	TENSION [daN]			SHEAR daN]		
	DRIVA TP 12	DRIVA TP 27	DRIVA TF 5	DRIVA TP 12	DRIVA TP 27	DRIVA TF 5
Aerated concrete AAC 5	6	6	6	9	9	9
Single gypsum panel 13mm	6	6	6	9	9	9