

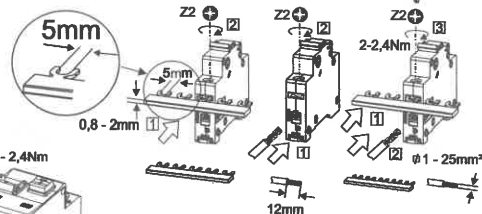
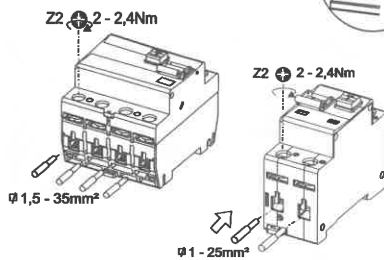
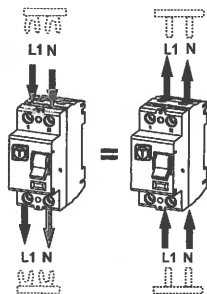
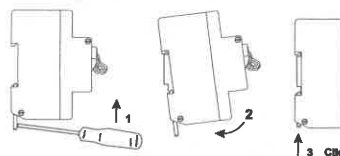
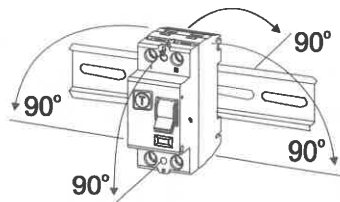
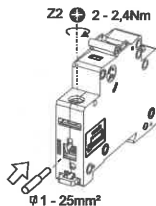
Assembly instructions
 Montageanweisung
 Instructions de montage
 Montážní návod
 Montážní návod
 Montagevejledning
 Instrucciones de montaje
 Szerelési utasítás
 Istruzioni di montaggio
 Montasje anvisning
 Montage instructie
 Instruções de montagem
 Instrukcja montażu
 Montageanvisning
 Asennusohjeet
 Montaj talimatı
 Instruțiuni de montaj
 Инструкция по монтажу
 οδηγία συναρμολόγησης
 安装说明书
 تعليمات التركيب



Danger
 Lebensgefahr
 Danger de mort
 Nebezpečí
 Nebezpečenstvo
 Fare
 Peligro
 Életveszély
 Pericolo di morte
 Fare
 Levensgevaar
 Perigo
 Niebezpieczeństwo
 Varning
 Vaara
 Hayati Tehlike
 Pericol
 Опасность
 κίνδυνος θανάτου
 危险
 خطر على الحياة

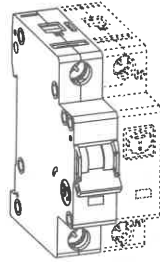


Installation by electricians only
 Montage nur durch Elektrofachkräfte
 Montage uniquement par un électricien
 Montáž pouze osobami s elektrotechnickou kvalifikací
 Montáž iba osobami s elektrotechnickou kvalifikáciou
 Má kun installeres af en aut. el-installatør
 Debe ser instalado por un profesional eléctrico
 Csak szakképzett személy szerelheti
 Montaggio esclusivamente ad opera di personale specializzato
 Må monteres av autorisert installatør Gr.L
 Montage alleen door elektromonteurs
 Deve ser instalado por um profissional
 Montaz tylko przez uprawnionych instalatorów
 Får endast utföras av behörig elektriker
 Asennus vain sähköasentajan toimesta
 Sadece uzman kisiler monte edebilir
 Instalare numai de catre electricieni
 Монтаж может производить только элекрик
 Εγκατάσταση μόνο από ηλεκτρολόγους
 仅允许合格电气技师进行安装
 التركيب فقط من قبل عمال كهرباء الاختصاصيين



grün
green
vert
zelený
Grøn
Verde
zöld
verde
Grønn
groen

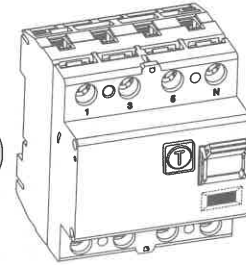
Verde
zielony
grön
Vihreä
yeşil
Verde
зеленый
trásko
綠色
: الأخضر



OFF

rot
red
rouge
rovereý
Rød
Rojo
vörös
rosso
Rød
rood

Vermelho
szereony
röd
Punainen
kirmizi
Rosu
красный
okkivo
紅色
: أحمر



ON

2 - 2,4Nm



2,5 - 35mm²
(Flexible cable
without ferrule)



30mA RCCB Types / FI Typen:



3+N
(240V/15V AC)



2-pole
(240V AC)



3-phase application without N
3-phásige Anwendung ohne N
(415V AC/Phase-Phase)



3-phase application with N
3-phásige Anwendung mit N
(415V AC/Phase-Phase)



3-phase load without N
3-phásige Last ohne N
(415V AC/Phase-Phase)



3-phase load with N
3-phásige Last mit N
(415V AC/Phase-Phase)



3+N
(240V/15V AC)



2-pole
2-polig
(240V AC)



3-phase application without N
3-phásige Anwendung ohne N
(240V/15V AC/Phase-Phase)



3-phase load without N
3-phásige Last ohne N
(240V/15V AC/Phase-Phase)

100, 300, 500mA RCCB Types / FI Typen:



3+N
(240V/15V AC)



2-pole
2-polig
(240V AC)



3-phase application without N
3-phásige Anwendung ohne N
(240V/15V AC/Phase-Phase)



3-phase load without N
3-phásige Last ohne N
(240V/15V AC/Phase-Phase)

Extension for RCD's:

Maximum back-up fuse

$I_n = 16-63A$

$I_n = 80A$

$I_n = 100A$

Short circuit

63 A gG/gL

80 A gG/gL

100 A gG/gL

Erweiterung für FI's:

Max. zulässige Vorsicherung

$I_n = 16-63A$

$I_n = 80A$

$I_n = 100A$

Kurzschluss

63 A gG/gL

80 A gG/gL

100 A gG/gL

