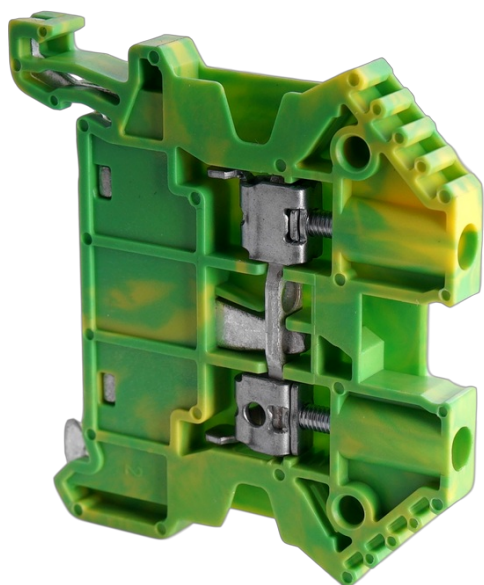


Bornes SSL2,5/2a vert/jaune

Internal Reference: CO171032



U(max) : 1000 V

cage clamp terminals with rising clamp and PE contact foot

IP20

ground terminal color according to IEC60947-7-2 standard

DIN rail mounting

Characteristics

Color	jaune/vert
I(n)	Cu 32 A A
Width	5 mm
Input section	1
Output section	1